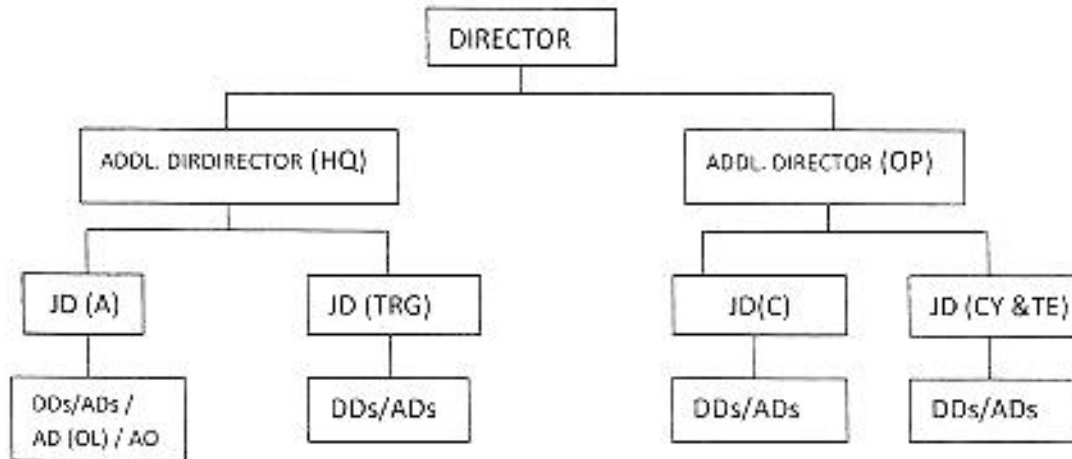


06 June 2019

OFFICE ORDER

Subject: Reallocation of Work assignment in DCPW

The organization chart of the Directorate is as below:

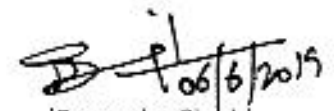


2. The work allotted to officers of DCPW has been reviewed and reassigned. The duties and responsibilities in DCPW are bifurcated into two sectors namely Headquarters and Operations to be headed by an Additional Director. Each sector is further divided into four divisions namely Administration, Training, Communications and Cipher each headed by a Joint Director.

3. The Additional Director and Joint Director would function from DCPW HQs except JD Training who would head CPRTI at Vande Matram Marg, New Delhi and will function from the institute.

4. Each Division is further divided into 'Branch' to be headed by a DD level officer and 'Sections' to be headed by an AD level officer. The detailed work allocation of DDs and ADs is enclosed. This reallocation of work assignment in DCPW is implemented with immediate effect in supersession of all earlier orders in this regard.

5. This issues with the approval of Director, DCPW.


(Devendra Singh)
Addl. Director (HQ)

Copy to:

1. Director, DCPW: for kind information pl.
2. Addl. Director (Operation)
3. All JDs/DDs/ADs / AD(OL) / AO
4. All ISPW Stations
5. AD(IT): for uploading on DCPW website

Work Allocation

				Responsibility
Additional Director(HQ)	Joint Director (A)	DD(A)	AD(A)	Administrative matters
			AD(OL)	Official Language
			Account Officer	Accounts matters
			AD(Stores)	Inventory / Store management
		DD(MM)	AD(MM)	Procurement
		DD(L&B)	AD(L&B)	Land & Building matters
			AD(IT)	IT / website matters
		DD(Coordination)	AD(Coordination) -I	Coordination
			AD(Coordination) -II	
		Joint Director (Trg)	DD(Trg)	AD(Trg) -I
	AD(Trg) -II			
	AD(Trg) -III			
	AD(Cy)			General administrative matters
	AD(Gen) - non faculty			
Additional Director(OP)	Joint Director (Commn.)	DD(C)	AD(C)	Communication matters of ISPW Stations
			AD(M)	Equipment management of ISPW Stations
			AD(CC)	Communication Centre Delhi
			AD(Monitoring)	Monitoring of Radio Networks of Police Org.
		DD(POLNET-Hub)	AD(POLNET-Hub) – I	Operations & Maintenance of POLNET-Hub
			AD(POLNET-Hub) – II	
			AD(POLNET Planning)	Planning & liaison with users, WPC, DoS, DoT for POLNET.
		Joint Director (Cipher & Technical Evaluation)	DD(Cy)	AD(Cy)
	DD(Workshop)		AD(Workshop)	Repairing & testing of DCPW's equipment.
			AD(Inspection)	Inspection / testing of new equipment of DCPW and CAPF / States/ UTs.

 06/6/2019